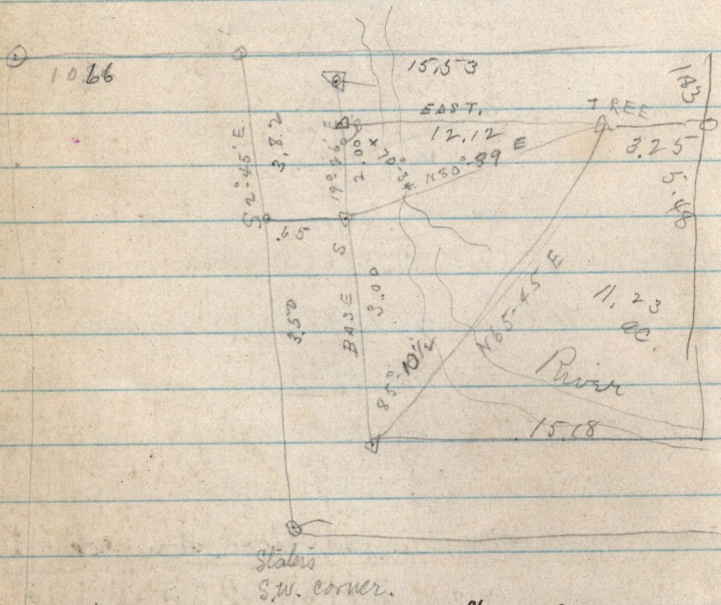


March 17-1885-

Beginning 10.66 ch East from the North West corner of Sec 23-T6NR2W and running thence S 2°-45'E. 7.32 chains

To obtain the points on the East side of Water River the following triangulation was made to a large tree



568-20 W
no. ml - H.S.

N 11-24 W
BEN LO

A = Co. Sur. mont. No. 44
= rock in SE cor.
see 28774